



33

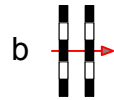
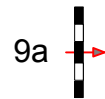
# Süderbrarup 19. - 21.07.2013

Springen mit Stechen

Klasse: A\*\*

Sonntag, 21. Juli 2013

Beginn: 10:45 Uhr



Ziel

Start Stechen

Ziel Stechen



Eintritt / Ausritt

## Holsteiner Schaufenster

Richtverf.: A  
LPO § 501 / B1  
RG / Art.  
Höhe: 1,10 mtr.

Tempo: 350 m/Min.

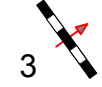
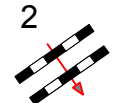
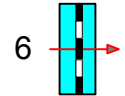
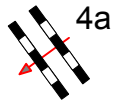
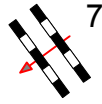
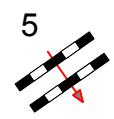
Bahnlänge: 380 mtr.  
Erlaubte Zeit: 66 sek.  
Höchstzeit: 132 sek.

Hindernisse: 9  
Sprünge: 11  
Hindernisfehler: sek.  
geschl. Hindernis:

1. Stechen über:  
**7-8-1-6-4ab-5-11**

Bahnlänge: 300 mtr.  
Erlaubte Zeit: 52 sek.

Start



SÜDERBRARUP